

# Insight Plant Analysis System

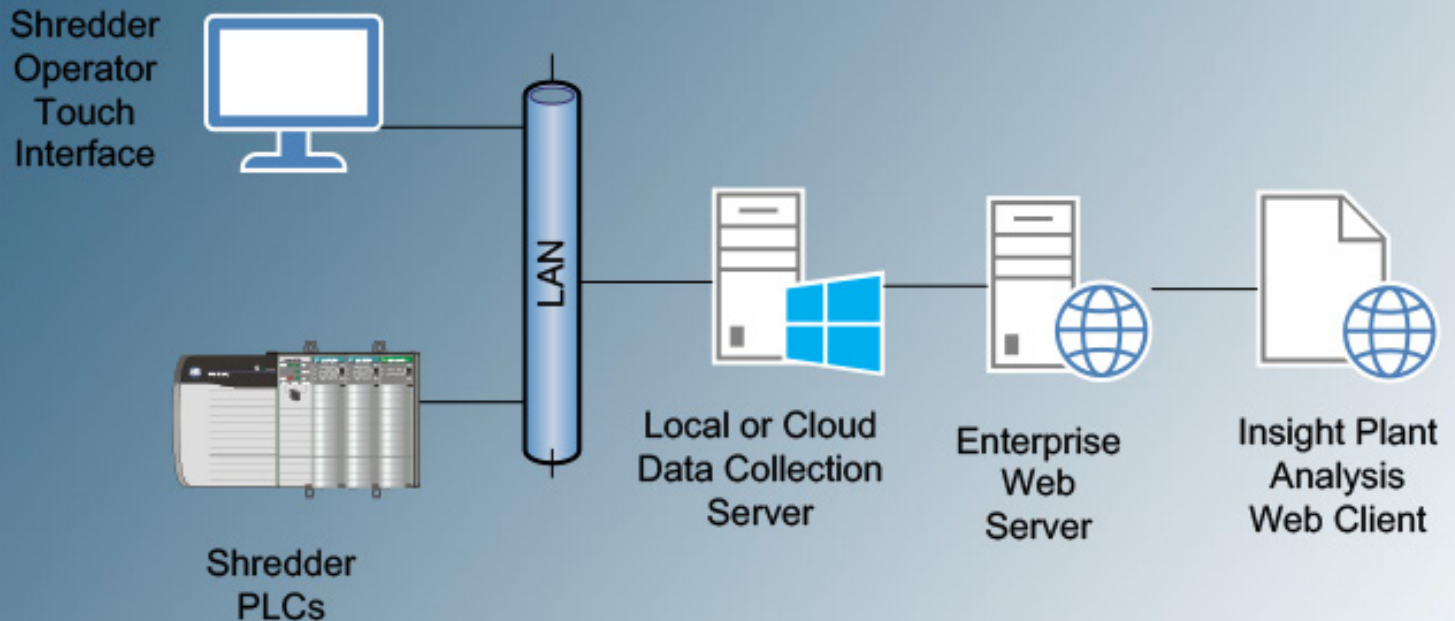
Intelligence Reporting for the Metal Recycling Industry



**Riverside Engineering**  
Makers of the MEGASHREDDER®

**866.764.7567**  
**megashredder.com**

# LOCAL NETWORK FOR ENTERPRISE



## INSIGHT PLANT ANALYSIS SYSTEM

### Intelligence Reporting for the Metal Recycling Industry

The Insight Plant Analysis System (IPAS) is a business intelligence reporting system designed exclusively for the metal recycling industry.

A collection of programs recording real time information about shredders and downstream operations, IPAS automatically reports Ferrous and Non-Ferrous tons, power, water usage, temperatures, pressure, flow rates and other process variables via easy-to-read daily production scorecards.

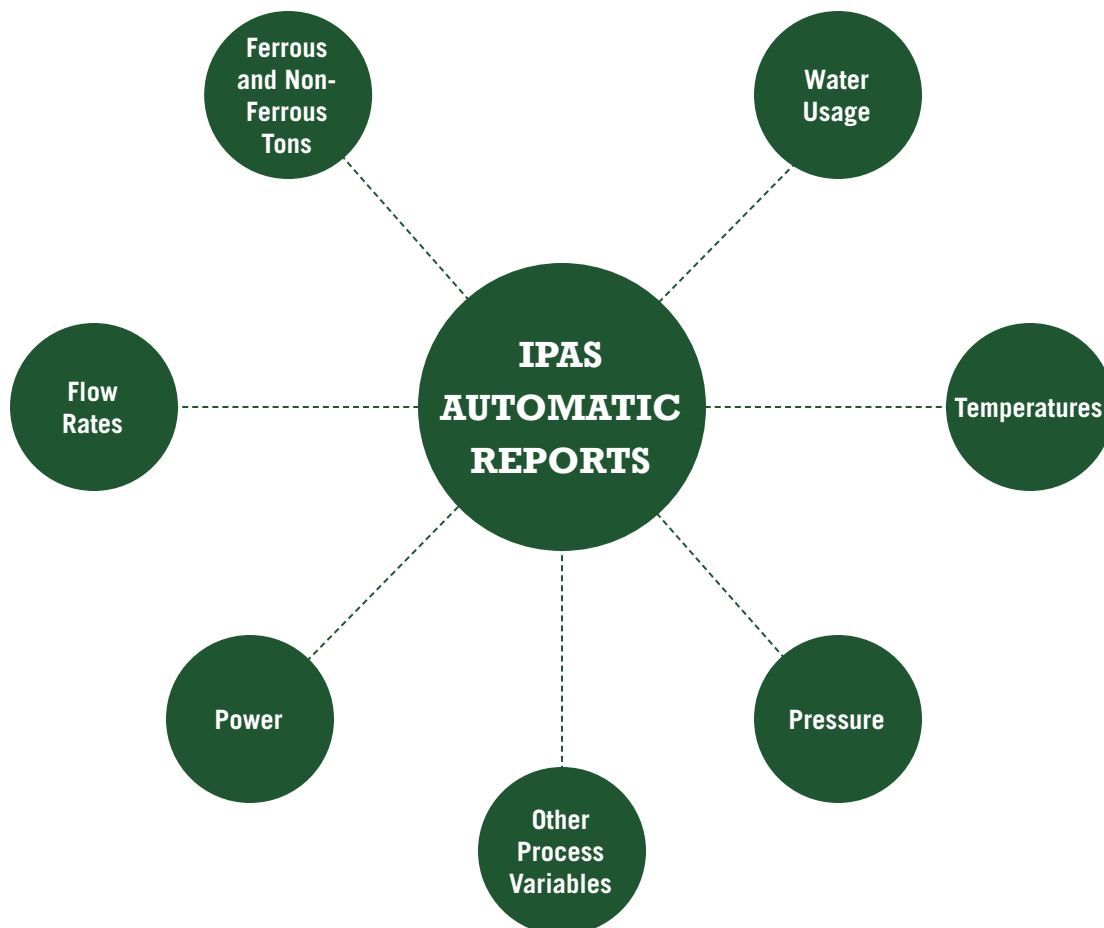
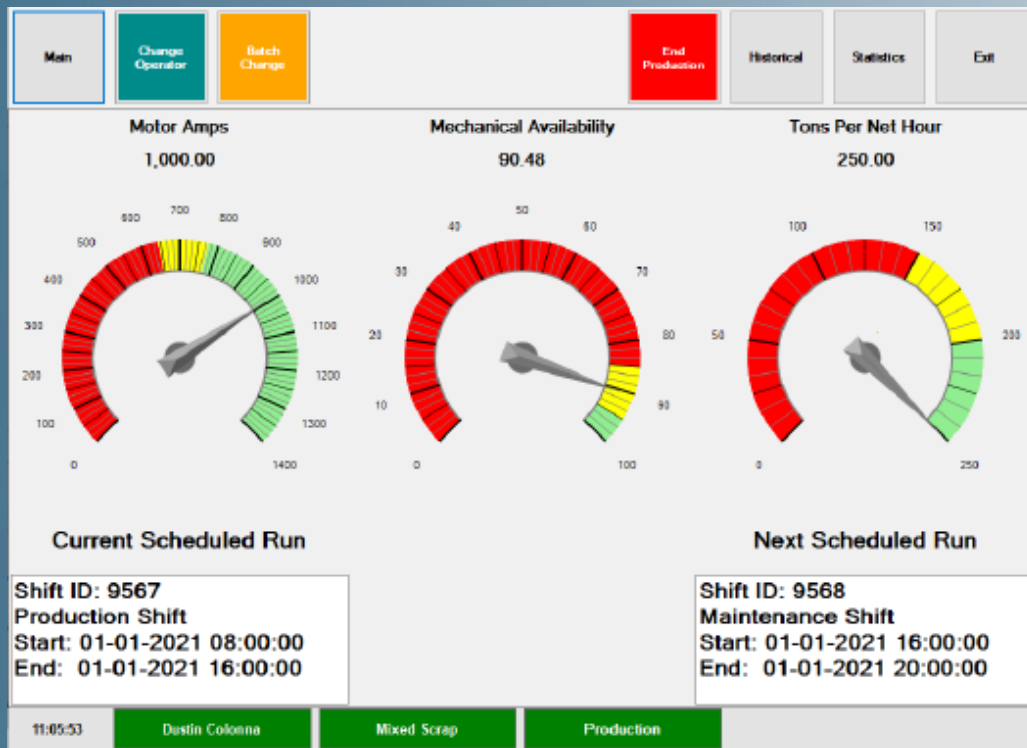
In addition, IPAS can detect downtime events and will prompt a Shredder HMI screen for causal recording. Plus, this system allows managers to review machine and operator performance, trend process variables like Bearing Oil temperatures and Motor Current, and pinpoint trouble areas in the process.

## HISTORICAL TRENDING AND REPORTING

To help managers pinpoint specific areas of focus, IPAS can create custom production reports, including the following:

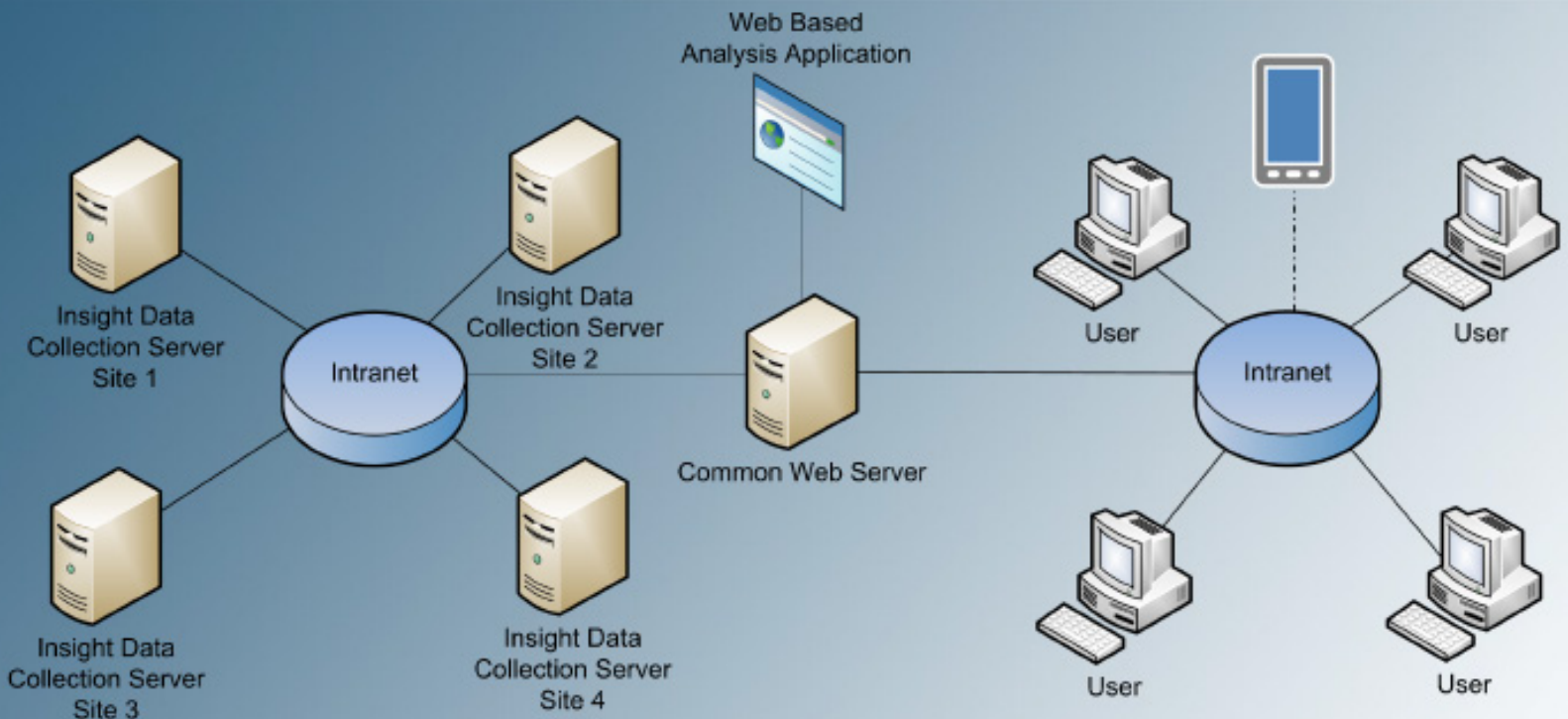
- » Shift
- » Selected Range
- » Monthly

# OPERATOR MAIN SCREEN (PRODUCTION)





## TYPICAL NETWORK FOR ENTERPRISE



## BENEFITS OF THE INSIGHT PLANT ANALYSIS SYSTEM



### **Predict Potential Failures Immediately**

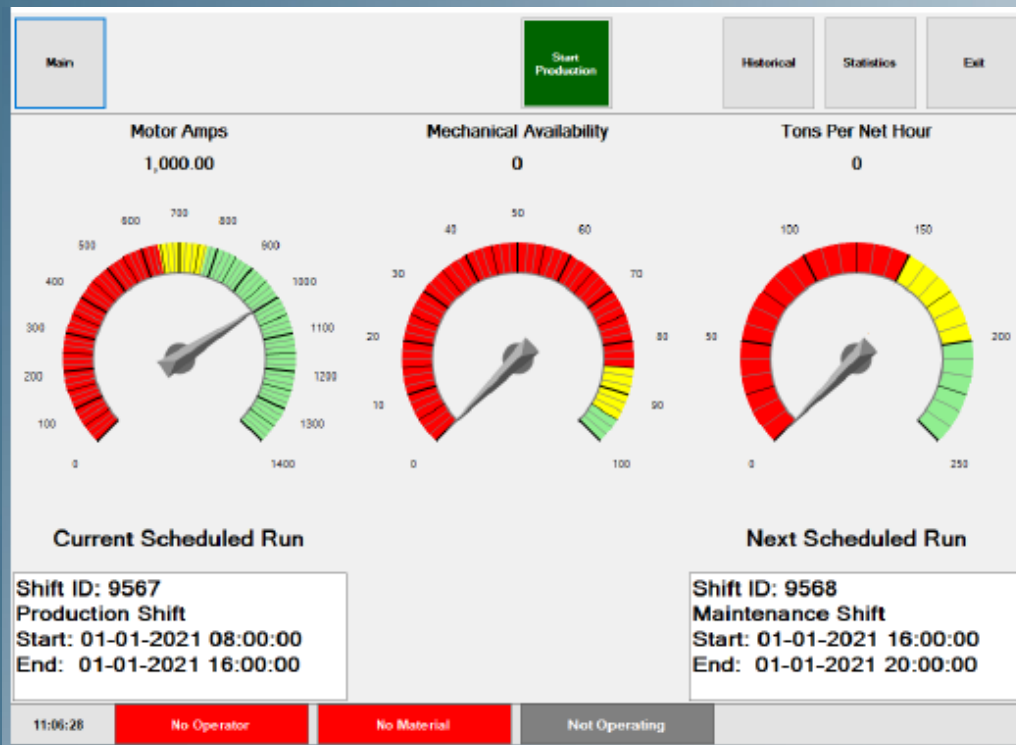
Helping to predict future failures, IPAS automatically tracks shredder performance in real time providing information analysis, reports, and historical trending necessary to address operational performance issues.



### **Improve Market Position**

IPAS provides a better perspective of the shredder operations, allowing executives to build an accurate business model and gain advantage, position, and direction in the actual market.

## OPERATOR MAIN SCREEN (NON-PRODUCTION)



### Navigate the Future Successfully

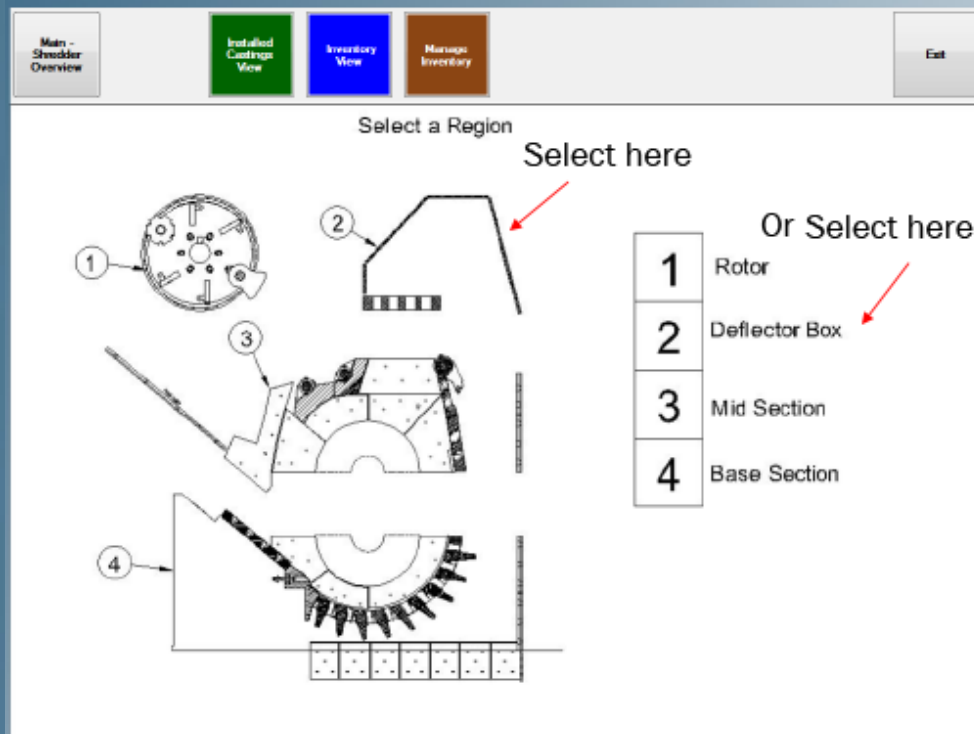
With a clear image of performance, both past and present, executives now can quickly devise strategy, set goals, and monitor performance, bringing the business to a higher level.



### Deliver Consistent Benchmarking

Site-to-Site comparisons are more effective when delivered from a common intelligence environment. With IPAS, data is stored in a MySQL database and is converted into easy-to-read reports, charts and graphs.

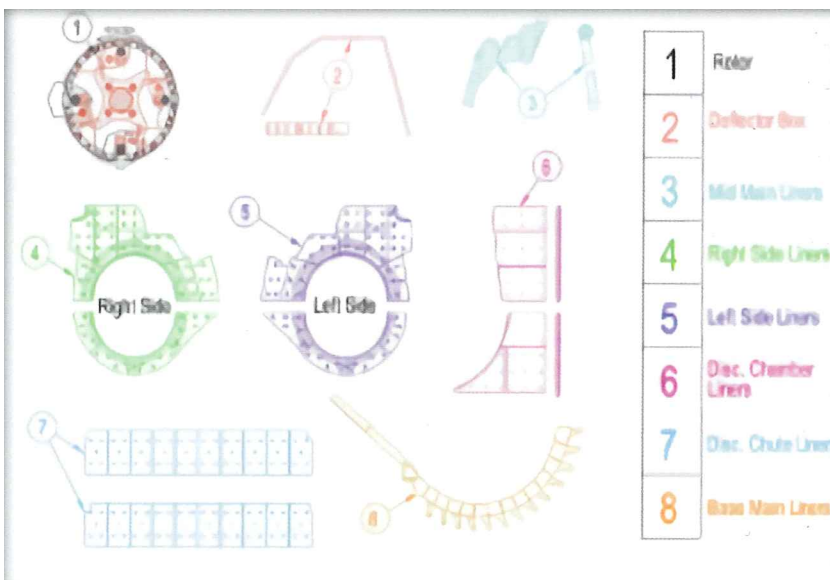
## CHANGING CASTINGS EXAMPLE



## INSIGHT CASTING MANAGER

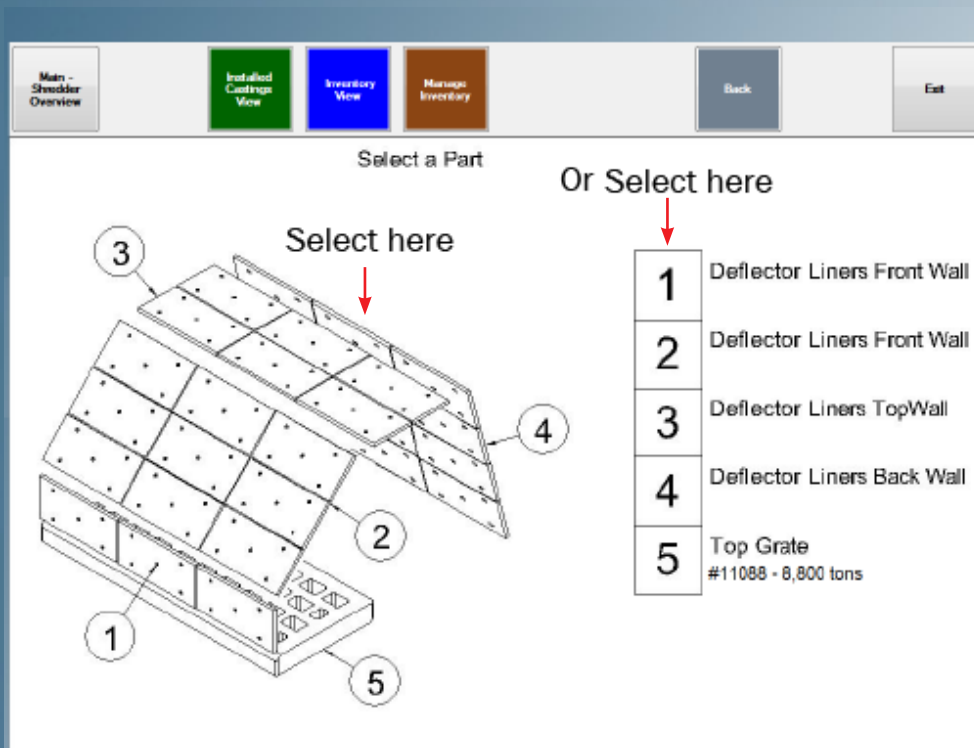
*Management Information to help Reduce Shredder Processing Cost*

**Automated Performance and Usage Tracking of Shredder Wear Parts**



- » Production totals recorded for each wear part
- » Management Reporting Package from centralized data server
- » View installed castings for predictive inventory management
- » Improved maintenance scheduling and efficiency
- » Measure casting life to evaluate production and suppliers

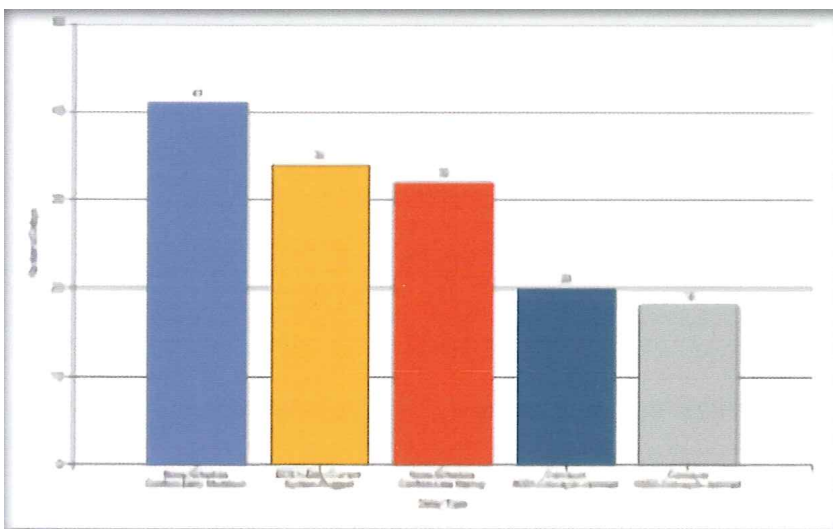
## CHANGE CASTING — DEFLECTOR



## INSIGHT NON-FERROUS PLANT PERFORMANCE REPORTING

*Production Data to help Improve Metal Recovery*

**Reporting and Measurement of Non-Ferrous Production**



- » Track NFE production delays
- » Measure metal recovery by product
- » Compare NFE yields based on input material
- » Management Reporting Package from centralized data server

Custom reports can be produced by Insight Plant Analysis System (IPAS) personnel to meet your company's needs. Contact us to arrange a free web-based tour of IPAS guided by a technical sales representative.





**B-p26**

SHAFT, 1045 Ø7-1/2" STOCK, MACHINE  
SCALE 1/8  
2 REQ'D

**SECTION A-A**  
SCALE 1/4

**B-p27**

SHAFT, 1045 Ø4-1/2" STOCK, MACHINE  
SCALE 1/8  
2 REQ'D

**SECTION A-A**  
SCALE 1/8

**B-t10**

Ø7.00 O.D. x 1/2" WALL x 7.00 I.D., SAW CUT  
SCALE 1/8  
1 REQ'D

**SECTION A-A**  
SCALE 1/8

**B-t11**  
TUBING, DOM 5.00 O.D. x 3/8" WALL x 4.25 I.D., SAW CUT  
SCALE 1/8  
1 REQ'D

**ASSEMBLY B-03 TAIL P**  
**B-s01 & B-s02 AS SHOWN**  
**B-02 AND BALANCE AT**

Ø17/32 DR. THRU  
ON Ø4.625 B.C. EQ. SP.  
AS SHOWN

0.06 X 45°  
2 PLCS.

1.00

0.50

0.06 X 30°  
2 PLCS.

R0.09-2 PLCS.

**SECTION A-A**  
SCALE 1/4

**B-s01**

SHAFT, 1045 Ø5-15/16" STOCK, MACHINE  
ON-DRIVEN STUB SHAFT FOR Ø2-7/16" BRG  
SCALE 1/4  
1 REQ'D



**Riverside Engineering**  
Makers of the MEGASHREDDER®

**866.764.7567**  
**megashredder.com**

Ø4.502 +0.002  
-0.000  
2 PLCS.

Ø29/64 DR. THRU  
1/2-20 UNE TAP THRU  
ON Ø5.375 B.C. EQ. SP.  
AS SHOWN-2 PLCS.

PL 1/2" A36

SEE P. 2